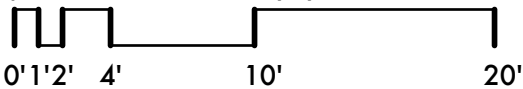


1,396 Square Feet Total

Unit sizes are approximate. The size of the unit may vary slightly due to changes created by existing building conditions including but not limited to locations of mechanical, electrical, plumbing, fire protection, and fire safety systems.



FIRST FLOOR

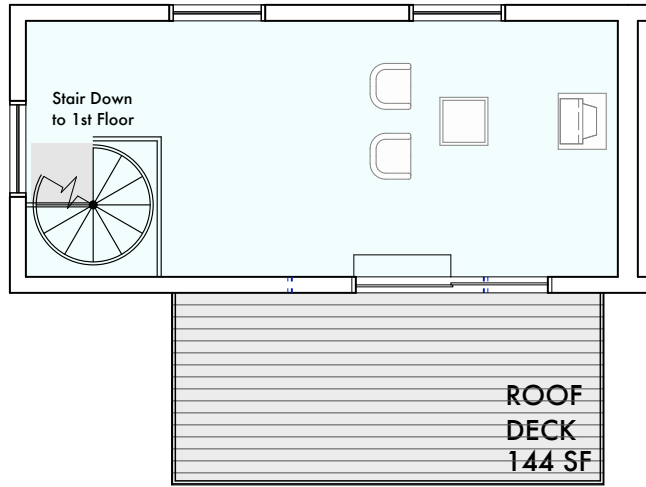
1,133 Square Feet

- Unit Area
- Existing brick wall with plaster finish
- New brick masonry between units
- New gypsum board between units

UNIT 206

Base Model

Research Lofts
Detroit, Michigan



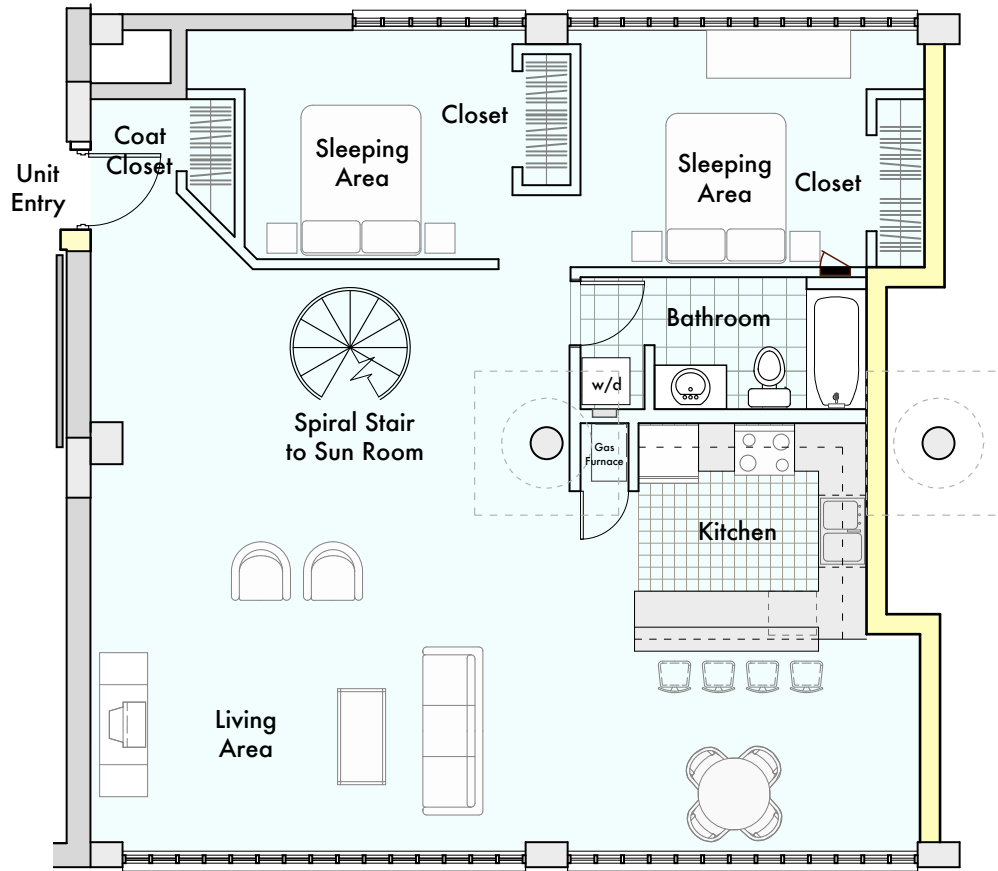
SUN ROOM & DECK
263 Square Feet

- Unit Area
- Existing brick wall with plaster finish
- New brick masonry between units
- New gypsum board between units

UNIT 206

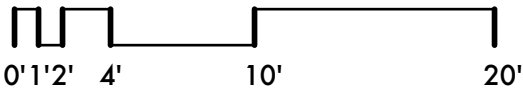
Base Model

Research Lofts
Detroit, Michigan



1,396 Square Feet Total

Unit sizes are approximate. The size of the unit may vary slightly due to changes created by existing building conditions including but not limited to locations of mechanical, electrical, plumbing, fire protection, and fire safety systems.



FIRST FLOOR

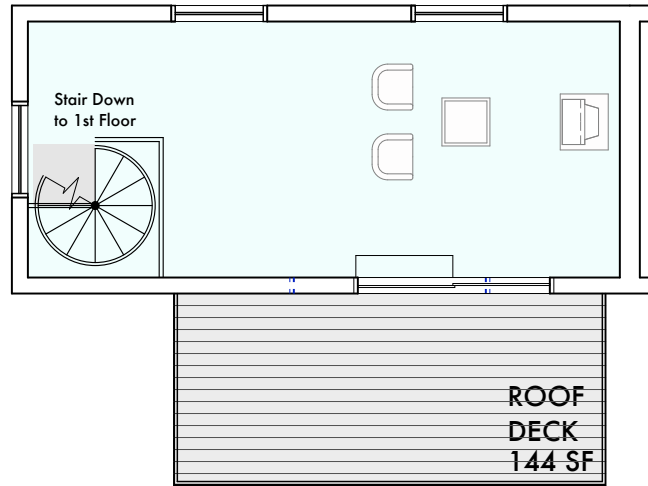
1,133 Square Feet

- Unit Area
- Existing brick wall with plaster finish
- New brick masonry between units
- New gypsum board between units

UNIT 206

Upgraded Model

Research Lofts
Detroit, Michigan



SUN ROOM & DECK
263 Square Feet

- Unit Area
- Existing brick wall with plaster finish
- New brick masonry between units
- New gypsum board between units

UNIT 206

Upgraded Model

**Research Lofts
Detroit, Michigan**