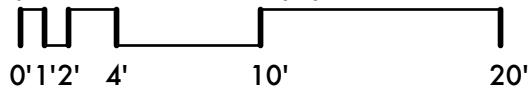


1,198 Square Feet Total

Unit sizes are approximate. The size of the unit may vary slightly due to changes created by existing building conditions including but not limited to locations of mechanical, electrical, plumbing, fire protection, and fire safety systems.



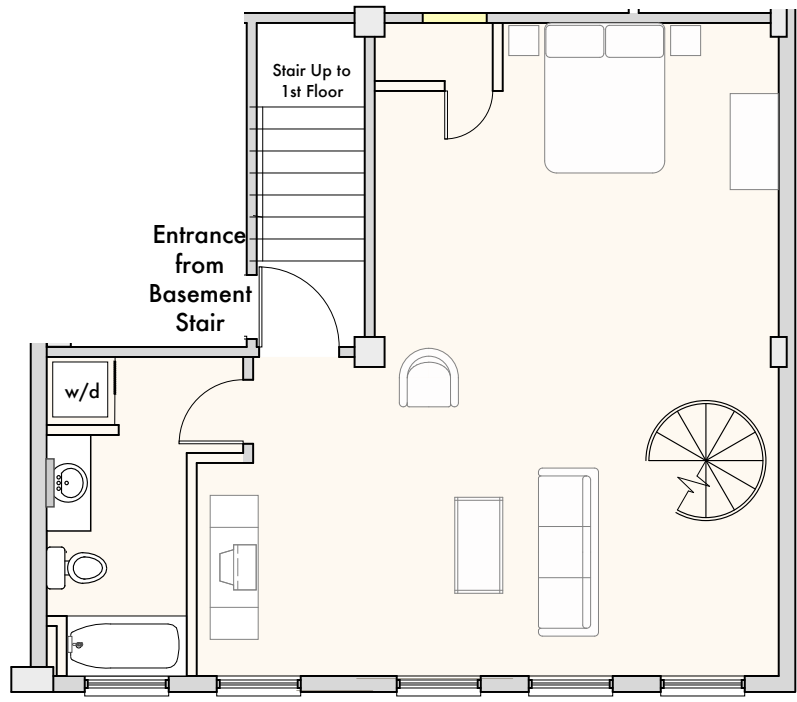
FIRST FLOOR 558 Square Feet

- Unit Area
- Existing brick wall with plaster finish
- New brick masonry between units
- New gypsum board between units

UNIT 101

Base Model

Research Lofts
Detroit, Michigan



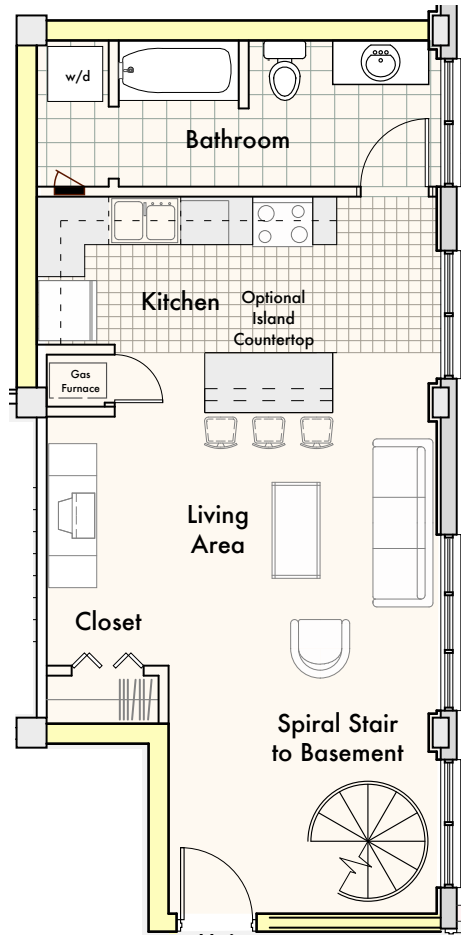
BASEMENT
640 Square Feet

- Unit Area
- Existing brick wall with plaster finish
- New brick masonry between units
- New gypsum board between units

UNIT 101

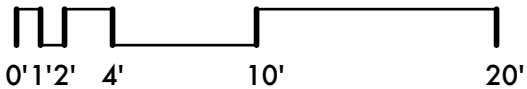
Base Model

Research Lofts
Detroit, Michigan



1,198 Square Feet Total

Unit sizes are approximate. The size of the unit may vary slightly due to changes created by existing building conditions including but not limited to locations of mechanical, electrical, plumbing, fire protection, and fire safety systems.



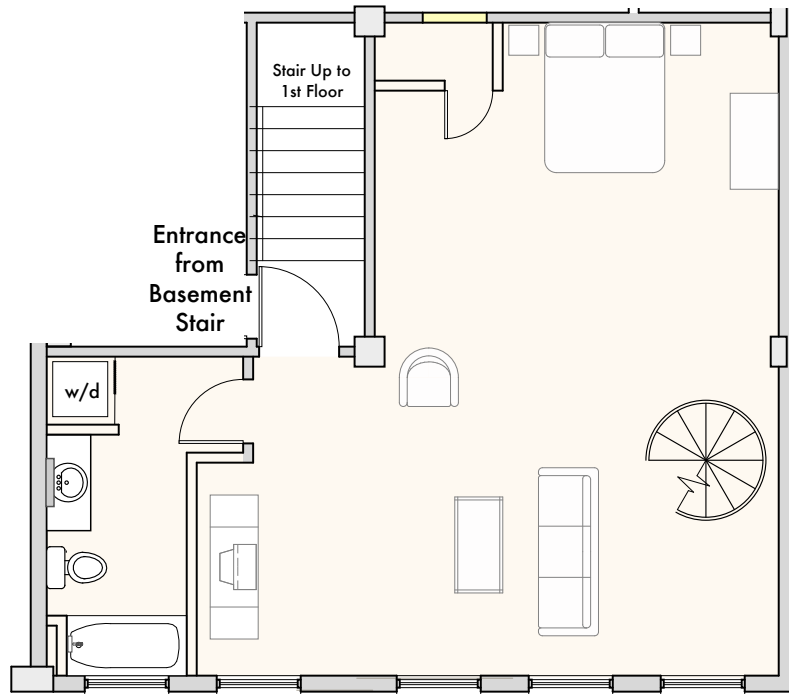
FIRST FLOOR 558 Square Feet

- Unit Area
- Existing brick wall with plaster finish
- New brick masonry between units
- New gypsum board between units

UNIT 101

Upgrade Model

Research Lofts
Detroit, Michigan



BASEMENT
640 Square Feet

- Unit Area
- Existing brick wall with plaster finish
- New brick masonry between units
- New gypsum board between units

UNIT 101

Upgrade Model

**Research Lofts
Detroit, Michigan**